

Electrical Box Landscapes Scavenger Hunt

You probably know who at least a few of your neighbors are. Maybe they're your aunts and uncles, grandparents or friends you go to school with. But did you know that you have non-human neighbors too? Lots of different species live right here in Medford in our backyards, parks, and along the Mystic River.

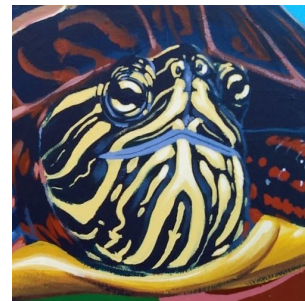
This fun scavenger hunt will introduce you to 10 animals and 10 plants that you can find right here in Medford! Can't tell which animal or plant is painted on the box? The name of each species is written somewhere on the box so you can copy it down.

All the boxes are located in Medford Square, so please make sure you're practicing traffic safety while you look for the boxes. Need help finding the locations of a box? Email sophy@sophytuttle.com to get a map of the locations!

Ready to start? Let's go!

1. I'm one of the most common native turtles in North America, and also one of the most beautiful!

I am the most abundant native tree in eastern North America, and my leaves turn a brilliant red in autumn.



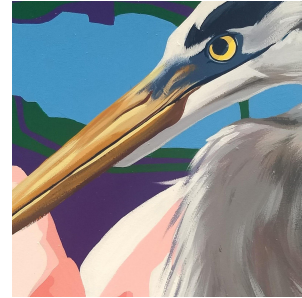
2. I am a butterfly who migrates thousands of miles every year to lay my eggs in the forests of the Sierra Madres in Mexico.

I am the flowering plant that butterfly relies upon for habitat and food, making me critical for their survival.



3. I am a water bird who spends 90% of my waking hours wading around looking for food.

I am a flower who floats on top of the water, sending my roots deep into the soil at the bottom of the lake or pond.



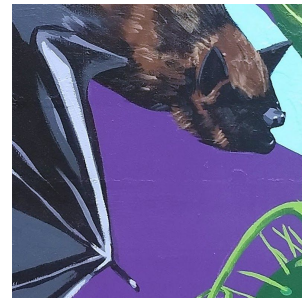
4. I am the best-known dragonfly species in the West, ranging from Alaska all the way down to Central America.

I can kill and eat nematodes and bacteria, making me one of the few carnivorous mushrooms.



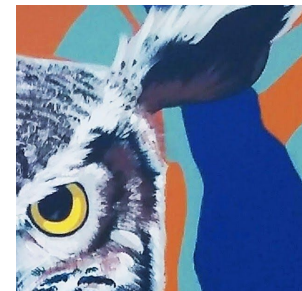
5. I am a bat who can consume half my body weight in mostly wasps and moths every night.

I am a fast-growing vine whose strange fruit contains four seeds and is covered with long, pointy spines.



6. My 'horns' are actually tufts of feathers called plumicorns.

I am a beautiful blue and purple flower commonly found along rivers and marshes, and in people's gardens.



7. I am a bird who likes to nest in a horizontal tunnel I construct with my mate along the banks of a river.

I am an edible mushroom that contains fiber, vitamin D, amino acids, protein, iron, copper, and some calcium.



8. I am a resourceful mammal who has adapted to living in cities by foraging on garbage and pet food.

I am a small flower who supports a variety of insect species and grows readily in urban environments.



9. You can tell me apart from my more common cousins by the black patches of fur between or at the ends of my ears.

You can use the juice of my berries to dye fabrics a beautiful light purple.



10. A brook named after me flows through Arlington, Cambridge, and Somerville before emptying into the Mystic River.

I am often blamed for seasonal allergies because I bloom at the same time as the ragweed plant.



Answer Sheet

1. Painted Turtle and Red Maple
2. Monarch Butterfly and Milkweed
3. Great Blue Heron and Water Lily
4. Green Darner Dragonfly and Oyster Mushrooms
5. Little Brown Bat and Wild Cucumber
6. Great Horned Owl and Blue Flag Iris
7. Belted Kingfisher and Winecap Mushrooms
8. Red Fox and Blue Wood Aster
9. New England Cottontail and Elderberry
10. Alewife and Goldenrod